



METALIX ENGINEERING



Arindam Sarkar

9874065259

9874665259

M/s. METALIX ENGINEERING

Fabricators & Engineers

Office Address: -- 65/2 Satyen Roy Road Behala Kolkata: ---700034

Factory:--Unit 1:-- Behala Chanditala Unit 2:-- Barasat Kolkata

Unit 3:-- Moynagare Behala

Website : www.pilingmachineindia.com

Email : pilingsolution@gmail.com • metalixengineering@gmail.com



METALIX ENGINEERING

ENGINEERING YOUR DREAM WITH US

Regd Office:- 65/2 Satyen Roy Road, Behala, Kolkata—700034

Workshop Address: - Barasat, Moynagore, & Behala Chanditala.

Mob:-9874065259/9874665259

E-mail:-metalixengineering@gmail.com



About Us

Founded in Kolkata in the year 1992, the METALIX ENGINEERING has established themselves as the benchmark in pre-fabricated Modular steel and metal buildings & Bridge Structural. We offer customized solutions for Commercial and non-commercial building structures.

The factors that have helped us in ensuring its sustainable growth are:

- Expertise in modern structural concept, analysis and design engineering
- Highly-skilled Professionals
- Stringent quality control and innovative research and development
- Relentless quest for product upgradation
- Well-equipped factories with ever-increasing production capacity
- Efficient Project Co-ordination Service
- Highly skilled Erection team with well-equipped construction machinery equipment





METALIX ENGINEERING

ENGINEERING YOUR DREAM WITH US

Regd Office:- 65/2 Satyen Roy Road, Behala, Kolkata—700034

Workshop Address: - Barasat, Moynagore, & Behala Chanditala.

Mob:-9874065259/9874665259

[E-mail:- metalixengineering@gmail.com](mailto:metalixengineering@gmail.com)



Commitment to Quality

METALIX ENGINEERING has well-equipped and organizational workshops to deliver the best Quality product within a minimum time frame. It has in-house chemical and physical test Laboratories as Well as a variety of highly-productive and state-of-the-art machinery, Including CNC Machine.



METALIX ENGINEERING

ENGINEERING YOUR DREAM WITH US

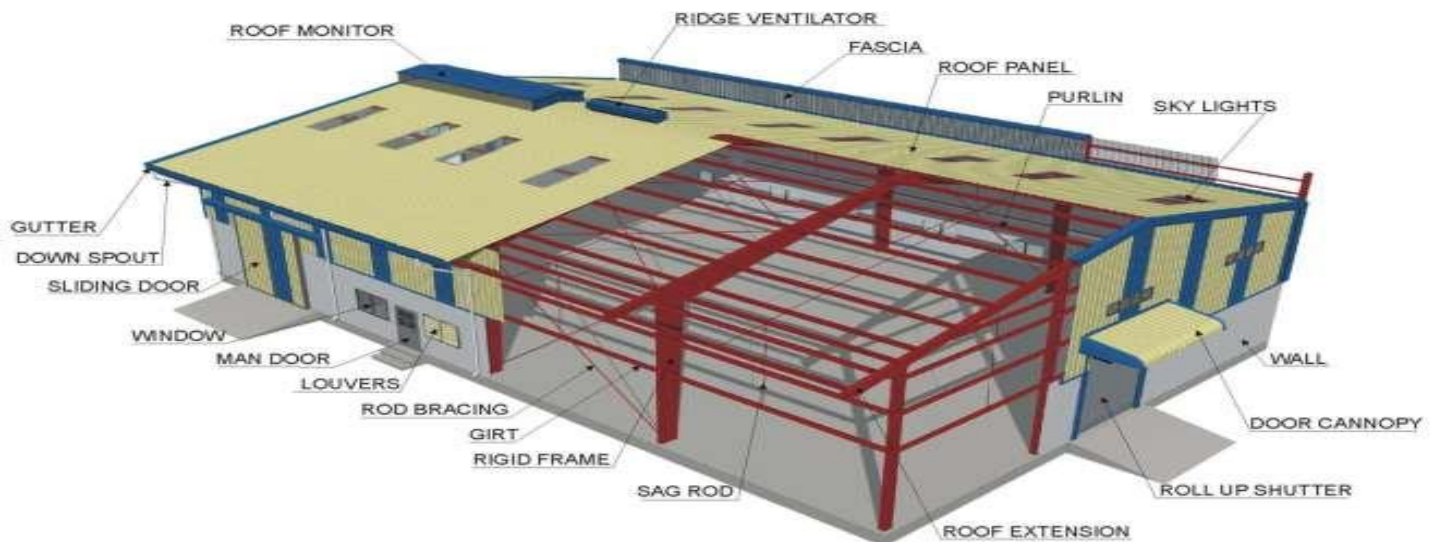
Regd Office:- 65/2 Satyen Roy Road, Behala, Kolkata—700034

Workshop Address: - Barasat, Moynagore, & Behala Chanditala.

Mob:-9874065259/9874665259

E-mail:-metalixengineering@gmail.com

Sl. No.	Name of Equipment's	Sl. No.	Name of Equipment's
1	Welding Machine	8	Turret Drill
2	Shearing Machine 400 MT with 4mts, bed	9	Circular Saw Cutter
3	Gas Cutting Sets	10	Hand Shearing Machine
4	Welding Machine (Rector type)	11	Mig Welding Machine
5	Portable Drilling Machine magnetic base	12	Pillar Drilling Machine
6	Riveting Machine	13	Radial Drill
7	Spot Welding Machine	14	Lathe 6 ft.





METALIX ENGINEERING

ENGINEERING YOUR DREAM WITH US

Regd Office:- 65/2 Satyen Roy Road, Behala, Kolkata—700034

Workshop Address: - Barasat, Moynagore, & Behala Chanditala.

Mob:-9874065259/9874665259

E-mail:-metalixengineering@gmail.com



Pre-engineered Metal Buildings (PEB) Manufacturer in India

METALIX ENGINEERING is a leading designer, manufacturer, supplier and erector of plated portal Pre-engineered Metal Buildings (PEB) in India. We deal in PEBs made of steel that are entirely factory manufactured post designing. Their erection involves the assembling of all the components and the use of bolts on-site, which is extremely time-saving.

PEB encompasses all types of constructions, including shopping malls, factories, showrooms, godowns, auditoria, sports complexes, and even community centres.

The Many Benefits of PEB:

- 1.** Functionally versatile: The clear-span is larger. They range from 40M and above. They have a long bay spacing, which helps in reducing the total number of columns and foundations.
- 2.** Architecturally flexible: PEBs offer better systems of metal cladding, and hence, are the perfect choice for Aesthetically superior building structures.
- 3.** Easy to erect: All the components are field bolted, and therefore, PEBs facilitate fast erection and very easy setting up of multi-deck structures.
- 4.** Superior quality: PEBs are earthquake resistant.
- 5.** Easy maintenance: They gather less dust and are easy to maintain.



METALIX ENGINEERING

ENGINEERING YOUR DREAM WITH US

Regd Office:- 65/2 Satyen Roy Road, Behala, Kolkata—700034

Workshop Address: - Barasat, Moynagore, & Behala Chanditala.

Mob:-9874065259/9874665259

E-mail:-metalixengineering@gmail.com



Space Frame structures

Space Frame Structures Manufacturer in India

At METALIX ENGINEERING, our Space Frame Structures are as versatile as our vision. We own a robust Experience of designing and executing a plenty of prestigious projects of space frame structures.

These include both simple and intricate projects ranging from bus shelters to stadiums

Space Frames are generally pantographic 3-D skeletal frameworks that comprise of pin-connected members. They fall under the category of Pre-engineered Steel Structures (PEBs), which are interlinked grids of a single, Double or multi-layer. These grids assist in the 3-D load sharing within the framework.

Such structures include cones and nodes, and are extremely flexible. The following are their benefits:

- Their three-dimensional structures are highly rigid. They facilitate load sharing with maximum precision.
- They have large spans which allow complete freedom of constructional design.
- The steel elements are demountable and lightweight. Therefore, their assembly is easier, safer and less time consuming.
- They allow column-free erection and a geometric balance. This enhances the aesthetics of the construction and offers flexibility.
- They are spacious and capable of bearing very high loads.
- Very efficient, both structurally and functionally.
- Space Frame Structures also allow the random placement of columns, along with integral cladding and glazing.
- These products have less cost of transportation.
- Easily expanded and are built following assembly line approaches with a very minimum amount of deflection and maximum amount of seismic resistance.



METALIX ENGINEERING

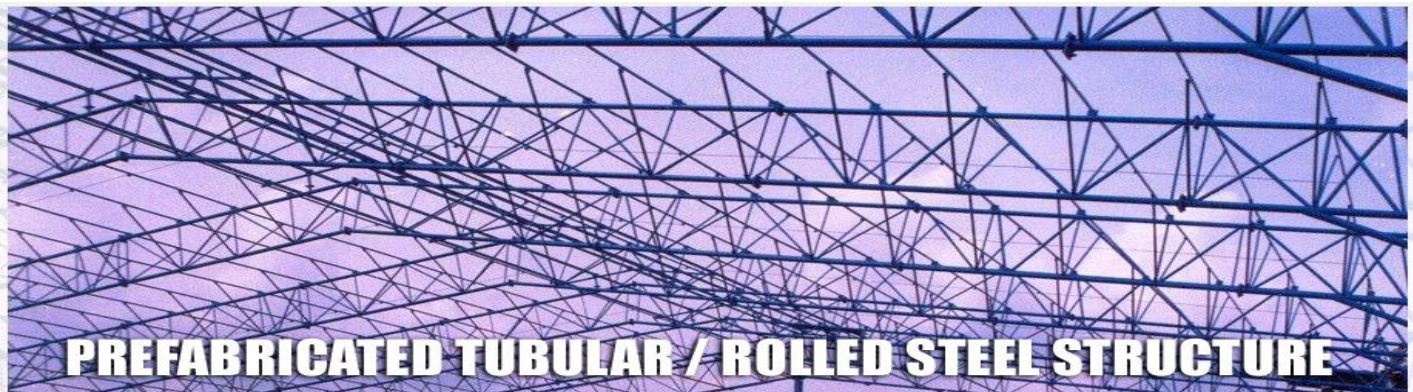
ENGINEERING YOUR DREAM WITH US

Regd Office:- 65/2 Satyen Roy Road, Behala, Kolkata—700034

Workshop Address: - Barasat, Moynagore, & Behala Chanditala.

Mob:-9874065259/9874665259

E-mail:-metalixengineering@gmail.com



Prefabricated Tubular / Rolled steel Structure

Pre-fabricated (Tubular / Rolled) Steel Structure Manufacturer in India

METALIX ENGINEERING is a pioneer in the pre-fabricated rolled and tubular steel structure fraternity, and is a provider of high quality customized solutions.

Yes, the application of pre-engineering building structures that bear hollow, steel sections is a concept which is still nascent in India. However, the design team at Amiya, has been an early adopter. We have been able to develop building designs economically with such hollow, tubular sections.

The biggest advantage of using them is their ease of manufacturing, transporting and setting up at different locations.

At [METALIX ENGINEERING](#), we indulge in the fabrication and installation of these tubular structures. We make sure to order raw materials of ASTM, IS or an equivalent standard. These materials are then inventoried at our factory with certified Mill test reporting. Accredited welders at Amiya carry out the welding work complying with the most recent Structural Welding Code. After that, our Department of Quality Assurance sees to it that all the Quality Control and Management Processes are strictly adhered to during the entire processing of an order.

The many benefits of rolled and tubular pre-fabricated structures:

- Construction is quicker and easier.
- Layouts are flexible.
- Construction processes are more economic.
- The structure bears seismic resistance.
- It is resistant to corrosion as well.
- It comes for a very low cost of maintenance.



METALIX ENGINEERING

ENGINEERING YOUR DREAM WITH US

Regd Office:- 65/2 Satyen Roy Road, Behala, Kolkata—700034

Workshop Address: - Barasat, Moynagore, & Behala Chanditala.

Mob:-9874065259/9874665259

E-mail:-metalixengineering@gmail.com

Services

Structural Design and Drawing

METALIX ENGINEERING has equipped itself variety of world class internationally reputed design and Engineering software to achieve faster, optimized and accurate designing and drafting by its Design & Engineering department.

Design Consultants

The key to METALIX ENGINEERING uninterrupted and seamless service has been its stable team of qualified and experienced group of Proposal engineers, design engineers and detailers, project and finance managers. We minimize time for scaling operations with total solutions, while keeping delivery quality in line with customer expectations.

METALIX ENGINEERING offers:

1. Structural Design and Drawing
2. Optimization of geometry & Configuration
3. Structural analysis by Registered Engineers
4. Proposal Development
5. Customized configuration
6. Detailed development

Installation of Building at site

Manufacturing and installation of PEB, Space Frame, tubular/rolled steel structure as per design and drawing. Erection & sheeting. In house erection and sheet laying service. Manufacturing and supply of Profiled Bare and Colour coated Galvalume Sheets.

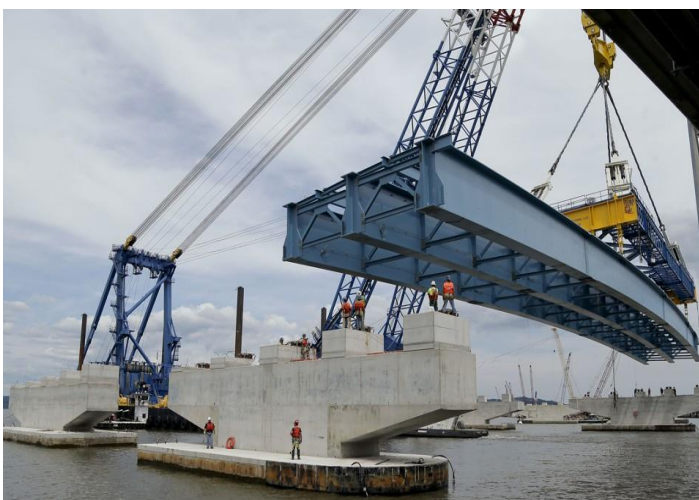
METALIX ENGINEERING

Jobsite Album



METALIX ENGINEERING

Jobsite Album





METALIX ENGINEERING

ENGINEERING YOUR DREAM WITH US

Regd Office:- 65/2 Satyen Roy Road, Behala, Kolkata—700034

Workshop Address: - Barasat, Moynagore, & Behala Chanditala.

Mob:-9874065259/9874665259

E-mail:-metalixengineering@gmail.com

Sl. No.	Project Name	Job site
1	Shade & Crane Girder at Liluah Eastern Railway	Liluah, Howrah
2	PEPSI Bottling Plant Project(Factory Shade)	Garia, Mahamayatala
3	Steel Bridge Girder Fabrication for Manipur PWD	Kangla, Manipur
4	Steel Bridge Girder Fabrication for Manipur PWD	Mongjam, Manipur
5	Steel Bridge Girder Fabrication for Manipur PWD	IREIMA, Manipur
6	Steel Bridge Girder Fabrication for Manipur PWD	Phijam Mapa, Manipur
7	Steel Bridge Girder Fabrication for Santragachi	Santragachi, Howrah
8	Steel Bridge Girder Fabrication for Arunachal	East Siang, Arunachal
9	Steel Bridge Girder Fabrication for Meghalaya	William Nagar, Meghalaya
10	Steel Bridge Girder Fabrication for Jharkhand	Latehar, Jharkhand
11	Steel Bridge Girder Fabrication for Nepal	Itahari, Nepal
12	Steel Bridge Girder Fabrication for Arunachal	Pasighat, Arunachal
13	Steel Bridge Girder Fabrication for Andaman	Port Blair, Andaman
14	Laxmi Motors Showroom & Workshop	Silchar, Assam



METALIX ENGINEERING

ENGINEERING YOUR DREAM WITH US

Regd Office:- 65/2 Satyen Roy Road, Behala, Kolkata—700034

Workshop Address: - Barasat, Moynagore, & Behala Chanditala.

Mob:-9874065259/9874665259

E-mail:-metalixengineering@gmail.com

Sl. No.	Project Name	Job site
15.	Nepali Sahitya Parishad Bhawan	Gangtok, Sikkim
16	Multi-Deck steel framing structure for community hall	Sikkim, Gangtok
17	Slag Crushing & Coal Storage Shed	Raipur, Chattisgarh
18	Steel Structure for Meditation Room	Siliguri, West Bengal
19	Exide Battery Factory Shade	Birshibpur, Howrah
20	Skipper Tower Testing Palnt	Baghnan, Howrah
21	Maruti Showroom cum Workshop	Bhubaneswar, Orissa
22	Boiler House Shed at HEC	Ranchi, Jharkhand.
23	Multi-Deck steel framing structure for community hall	Sikkim, Gangtok
24	Slag Crushing & Coal Storage Shed	Raipur, Chattisgarh
25	Steel Structure for Meditation Room	Siliguri, West Bengal
26	Steel Structure for Warehouse	Guwahati, Assam
27	See food processing unit site	Badra, Orissa

METALIX ENGINEERING (Jobsite Album)



Contact:-METALIX ENGINEERING

Mobile No: -9874665259/9874065259/8621904924

Mail: -metalixengineering@gmail.com

Assuring our Best Service at All Times

